

## Flexibility of KNX Underlined

### Introduction:

A large Victorian house in Holland Park features a KNX controlled integrated building services solution. The project was undertaken by Reality Logic and is a highly sophisticated installation that is flexible and future proofed, whilst embracing a minimalist aesthetic approach.

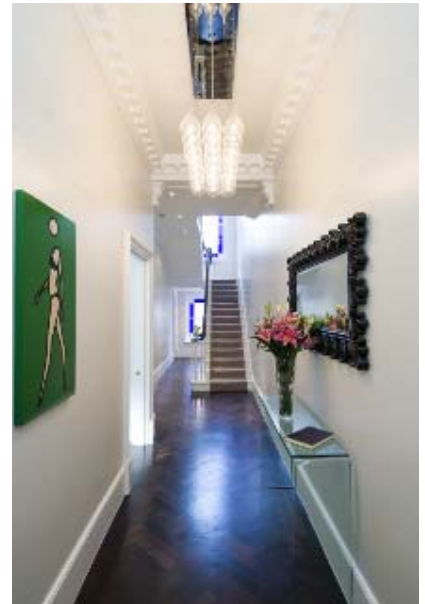


### Key Requirements:

- Integrated control of lighting, heating, blinds and AV.
- Remote access and control.
- Keep aesthetics clean and simple.
- Robust and resilient control technologies.

### KNX Features:

- KNX monitors the property, manages time clocks, control heating and occupancy simulation.
- Stylish and functional wall switches.
- Combined torch panels for climate, lighting, facades, access and AV.
- KNX enables AV controls for 13 zones of audio with IP interface.
- Achieved with budget not possible with other technologies.



### KNX Integrator:

Reality Logic